

PC System Requirements

Ensure that your PC has the following before attempting to install the software.


- Microsoft Windows 7 or later.
- A maximum of 500MB of free disk space is required.
- For VisualAdrian, VisualFlonet and VisualPiper, Microsoft Office Visio 2013 or higher with the Macro Security set to Medium.

Installing the software

Note You must have Administration privileges to install the software.

1. Close any applications you have running before installing PEL.
2. Download the PEL Installation Kit from the **Downloads** page of the PEL website, www.pelsoftware.com/installs.php. Click the **PEL Installation Kit**.

Downloads > PEL



Standalone PEL Installation

Download the PEL software for a 30 day evaluation period - absolutely free!

Click [here](#) to view the Standalone Installation Procedure.

Click [here](#) to download the PEL Standalone Installation Kit 22 (~275MB).

When prompted, choose to **SAVE** the file to your computer and run the installation from there.

You will need to register in order to activate PEL. Once you have installed the software, just contact us with your unique licence key and we will activate the software for your 30 day evaluation.

3. After downloading, unzip the file and double-click the file **Setup-PEL23.exe**.
4. You may be prompted for your administrator password.
5. Follow the instructions, selecting the **Typical** option (or **Custom** if you wish to add Flonet, Adrian, Piper or remove other programs) which will take you through the self-explanatory installation procedure.

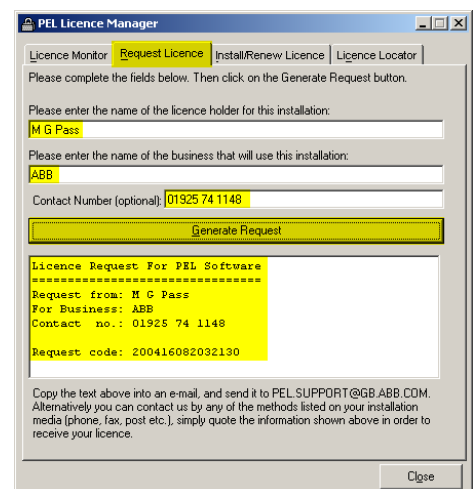
Obtaining a PEL Licence

1. Run the PEL Licence Manager by clicking **Start > PEL Launcher** then click the icon **Licence & Settings**.
 - Click the tab **Request Licence**,
 - Enter your Name, your Company Name and your Contact Telephone Number,
 - Click the **Generate Request** button.

This will generate a licence request code.

2. E-mail this code to pel.support@gb.abb.com.

A Licence file (PEL.LIC) will be sent to you normally within the next 24 hours.

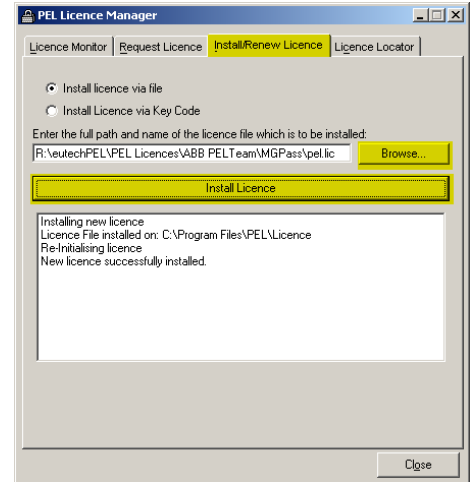


The screenshot shows the 'PEL Licence Manager' window with the 'Request Licence' tab selected. It contains a form with the following fields and values:

- Request Licence tab selected
- Field: 'Please enter the name of the licence holder for this installation:' with value 'M G Pass'
- Field: 'Please enter the name of the business that will use this installation:' with value 'ABB'
- Field: 'Contact Number (optional):' with value '01925 74 1148'
- 'Generate Request' button
- Output area showing: 'Licence Request For PEL Software', 'Request from: M G Pass', 'For Business: ABB', 'Contact no.: 01925 74 1148', and 'Request code: 200416082032130'
- Footer text: 'Copy the text above into an e-mail, and send it to PEL_SUPPORT@GB.ABB.COM. Alternatively you can contact us by any of the methods listed on your installation media (phone, fax, post etc.), simply quote the information shown above in order to receive your licence.'
- 'Close' button

Installing the PEL Licence file

1. When you receive your PEL licence, save it to a temporary location on your PC.
2. Run the PEL Licence Manager by clicking **Start > PEL Launcher** then click the icon **Licence & Settings**.
3. Click the tab **Install/Renew Licence**.
4. Click **Browse** to locate the **PEL.LIC** file.
5. Click **Install Licence**.



This program is developed, maintained and supported by PEL Support Services, ABB. We run a Hotline telephone and email service to answer any queries about the PEL products. You can contact us:

E-mail: pel.support@gb.abb.com
Telephone: +44 (0)1925 74 1126
Fax: +44 (0)1925 74 1265
Website: www.pelsoftware.com

Post: PEL Support Services
ABB Limited
Daresbury Park, Daresbury
Warrington, Cheshire, WA4 4BT