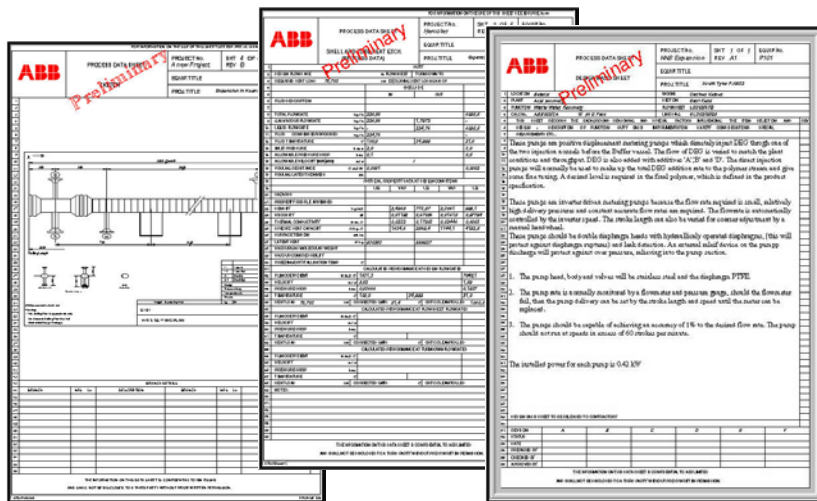


GENERAL FACTSHEET

# PEL ProveuDB.net

## For process data management



PEL ProveuDB.net is a simple but powerful document management system with process datasheets at its heart. Installed locally or accessed on the web, your data is available when you want it wherever you are.

01 Preliminary reports.

The proper management of process engineering data is vital. QA processes for checking and approving ensure that datasheets, calculations, reports, sketches, and other design documents are correct. Revision control for modifications and updates ensure that the most up-to-date versions are used. Information on a datasheet must be linked to the calculations and data it is based upon.

PEL ProveuDB.net is a well-established solution for managing this.

### What does PEL ProveuDB.net offer?

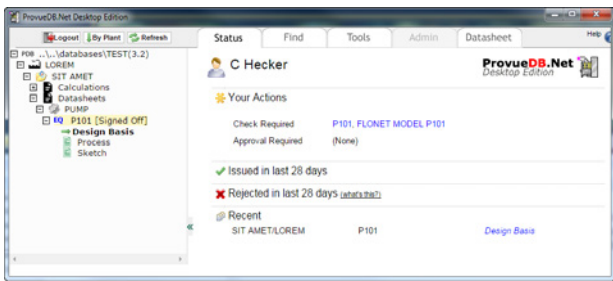
PEL ProveuDB.net is a database management system that makes datasheet production fast, simple and productive. Users have access to over one hundred pre-designed datasheets or can use their own, and the program ensures that process engineering data is accessible and controlled at all times.

In order to ensure that everyone is working from the same, up-to-date revision, PEL ProveuDB.net manages revision control and enforces checking and approving. In addition to datasheets, the latest version introduces support for calculations and other document types and allows links to be created between them. Users can quickly jump from a sketch to a datasheet and then to the calculation it is based on.

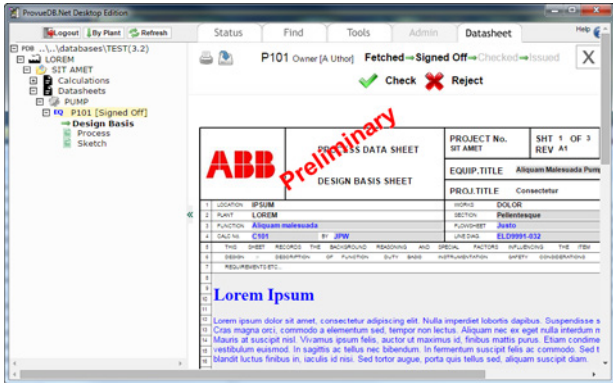
The online version, [www.PELProveuDB.net](http://www.PELProveuDB.net) means that all this data can be accessed over the internet, wherever users are in the world, via a normal web browser. PEL ProveuDB.net desktop edition provides the same functionality but allows you to keep your data on your own PC or network.

### Key features

- All versions
  - Heads-up display of your actions - what's waiting for you to check and approve, what's been rejected, and a list of the last 5 datasheets you've been working on
  - Full audit trail of what has been changed and why for every data item
  - Visual distinction between issued and revised data
  - Easy navigation between datasheets, calculations, sketches and other linked documents
- [www.PELProveuDB.net](http://www.PELProveuDB.net)
  - Nothing to download or install
  - Access your data 24/7 through your web browser
  - Create / edit / check / approve datasheets on line - any time, any place, anywhere
  - Always run the latest, up-to-date release - no upgrades to install
- PEL ProveuDB.net desktop edition
  - All of your data can be stored on your PC or shared with your colleagues on a network



02



03

02 Personal dashboard shows your recent activity and ongoing tasks.

03 Easily check, approve or reject datasheets.

04 See revision history of every data field.

05 Put PEL calculations into PEL ProvueDB.net document control.

06 See the links between calculations and datasheets.

### Benefits

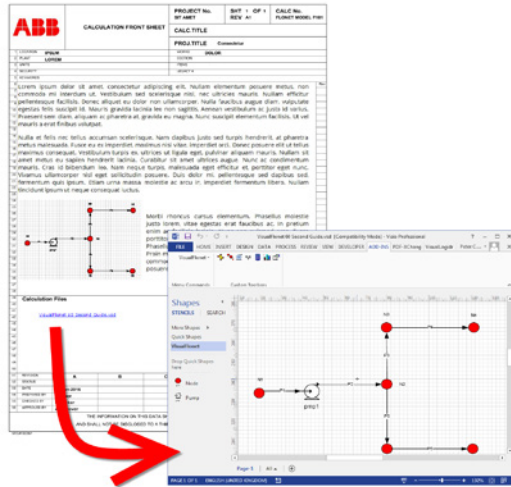
- Ensures QA procedures are implemented easily and correctly every time
- Manages revision control, and enforces checking and approving
- Provides easy access to the latest design information from multiple locations so you are always working with the right information
- Allows storage of your Word documents, Excel spreadsheets, Visio models, PEL calculations, and other files
- Allows easy navigation between datasheets and the design calculations they are based on
- Easily adapts and incorporates existing datasheets

PEL software has been helping process engineers for over thirty years. It has a proven track record providing relevant and reliable engineering tools. The software is extremely easy to use and you can be up and running within minutes. We are constantly developing our software to improve functionality and usability.

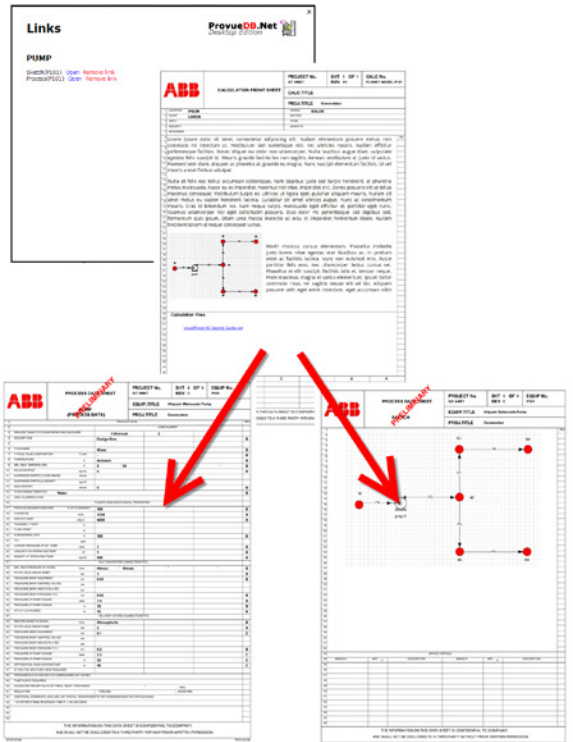
PRESSURE AT PUMP FLANGE	bara	3.3	
PRESSURE AT PUMP FLANGE	m		
DIFFERENTIAL HEAD ACROSS PUMP	m		
IS THIS THE MAX PUMP HEAD REQUIRED			
PREWORK ELEVATION DITCH (DIMENSIONED) ATTACHED			
PUMP CURVE REQUIRED			
SUGGESTED RELIEF VALVE SETTINGS INLET / DISCHARGE			
INSULATION			

REV	Value
B	2.8
C	3.3

04



05



06

PEL Support Services  
 ABB Consulting, Daresbury Park,  
 Daresbury, Warrington, Cheshire  
 WA4 4BT United Kingdom  
 Phone: +44 (0)1925 741126  
 E-Mail: pel.support@gb.abb.com

pelsoftware.com

We reserve the right to make technical changes or modify the contents of this document without prior notice. With regard to purchase orders, the agreed particulars shall prevail. ABB does not accept any responsibility whatsoever for potential errors or possible lack of information in this document.

We reserve all rights in this document and in the subject matter and illustrations contained therein. Any reproduction, disclosure to third parties or utilisation of its contents – in whole or in parts – is forbidden without prior written consent of ABB. Copyright © 2017 ABB All rights reserved

